

X_YTEX in beamer

Shinsaku Fujita

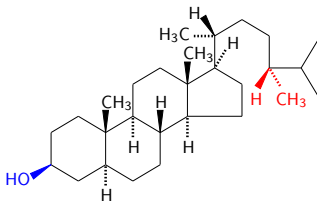
Shonan Institute of Chemoinformatics and Mathematical Chemistry

2010/10/01 ©

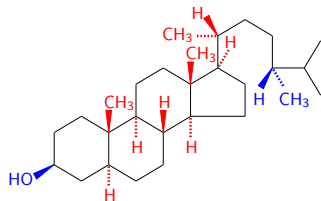
Structures by $\XintE\TeX$ in beamer

- High-level and Low-Level Macros for Drawing Steroid Derivatives:

high-level macro:



low-level macro:

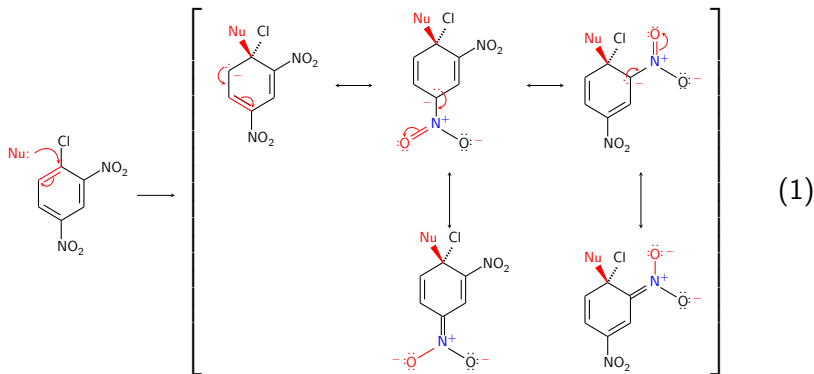


- `\cholestanealpha` vs. `\steroidchain`

cf. Section 11.3 in the on-line manual of $\XintE\TeX$ Version 5.00.

X_YMT_EX Structures in ChemEquation Environment

- Nucleophilic Substitution:

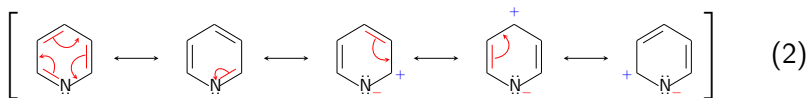


- Right-hand side: a set of resonance structures for representing a Meisenheimer intermediate.

cf. Section 13.5 in the on-line manual of X_YMT_EX Version 5.00.

X_YTeX Structures in ChemEquation Environment

- Delocalization in a Pyridine Ring:

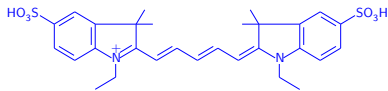


- Curved arrows for representing electron shifts.

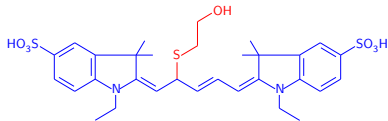
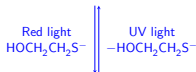
cf. Section 13.3 in the on-line manual of X_YTeX Version 5.00.

X^YM_TE_X Structures in ChemEqnarray* Environment

- Thiols and Cyanine Dyes:



Fluorescent



Dark

- Behaviors toward lights of different wavelengths.

cf. Section 13.7 in the on-line manual of X^YM_TE_X Version 5.00.